

CONFIGURATION TABLE (SEE NOTE 6.1)						
PART NUMBER	C MIN [pF]	C MAX [pF]	TC [PPM/°C]	Q MIN. @ 1 MHz	MARKING COLOR	ALTERNATE COLOR
JZ030	1.5	3.0 +50% / -0%	0 ± 200	500	BLACK	BLACK & GREEN
JZ060	2.0	6.0 +50% / -0%	0 ± 300	500	BLUE	BLUE & GREEN
JZ080	3.0	8.0 +50% / -0%	-750 ± 500	500	VIOLET	VIOLET & GREEN
JZ100	2.0	10.0 +100% / -0%	0 ± 300	500	WHITE	WHITE & GREEN
JZ150	3.0	15.0 +100% / -0%	0 ± 500	500	PINK	PINK & GREEN
JZ200	4.5	20.0 +100% / -0%	0 ± 500	500	RED	RED & GREEN
JZ300	5.5	30.0 +100% / -0%	-1500 ± 1000	200	ORANGE	ORANGE & GREEN
JZ400	8.0	40.0 +100% / -0%	-1500 ± 1000	200	YELLOW	GREEN OR YELLOW & GREEN
JZ500	8.0	50.0 +100% / -0%	-1500 ± 1000	200	GREEN	GREEN & GREEN

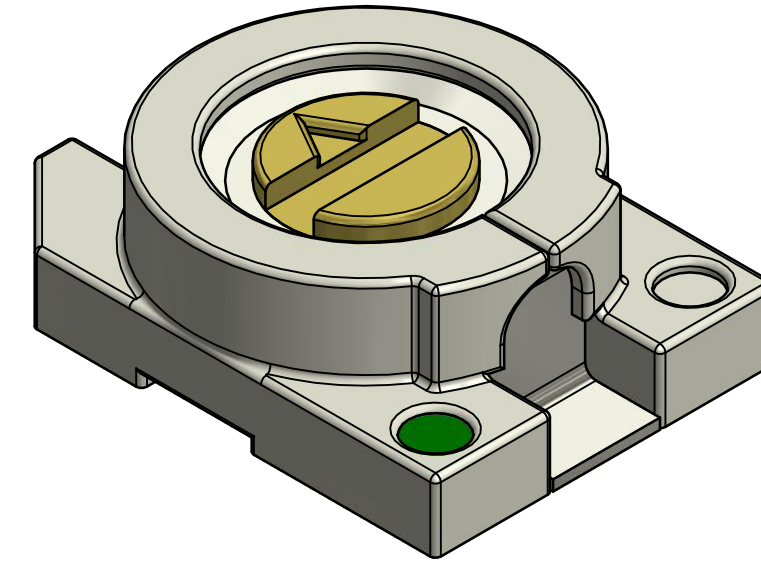
E

REVISION HISTORY					
ECO#	ZONE	REV	DESCRIPTION	DRAWN	APPROVED
		C	REDRAWN	AS 09/17/09	AG
1392	ALL	D	JZ500 ADDED; UPDATED TO CURRENT STANDARDS AND LATEST SPECIFICATIONS	EC 11/26/14	TD 12/04/14
1474	TAG	E	NOTE 6.1 ADDED. SUBSTITUTIONS OPTIONS DETAILED	EC 12/09/15	

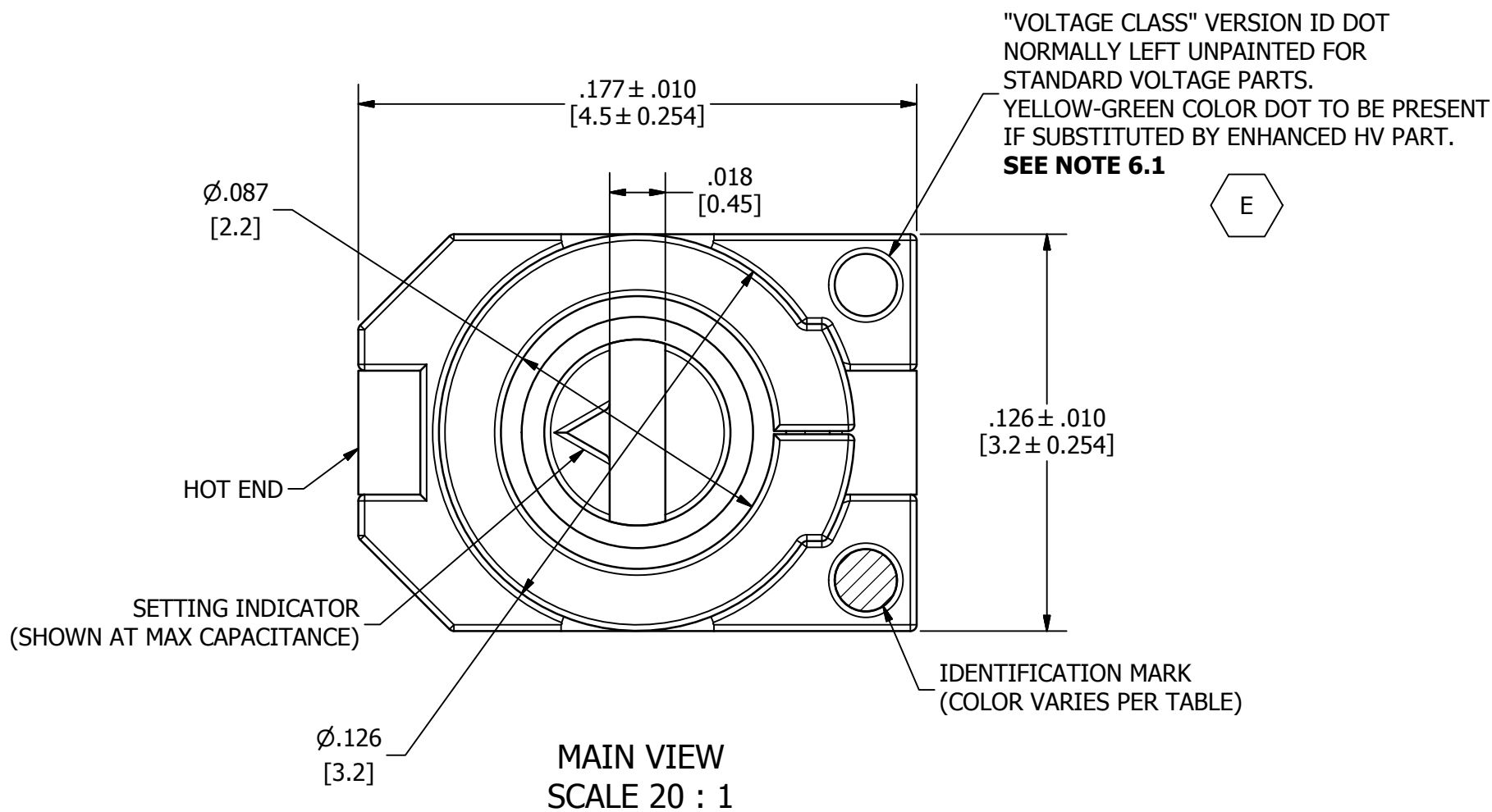
NOTES:

- INTERPRET DRAWING PER ANSI Y14.5M-1994.
- [ALTERNATE DIMENSIONS]** ARE IN MILLIMETERS.
- ELECTRICAL SPECIFICATIONS:
 - CAPACITANCE RANGE: SEE CONFIGURATION TABLE.
 - DC WORKING VOLTAGE AT MAX. RATED CAPACITANCE: 100 [VOLTS].
 - DC WITHSTANDING VOLTAGE AT MAX RATED CAPACITANCE: 220 [VOLTS].
 - Q FACTOR AT 1 [MHz] AND MAX RATED CAPACITANCE: SEE CONFIGURATION TABLE.
 - INSULATION RESISTANCE: 10^4 [MEGAOHMS] AT 25°C.
 - TEMPERATURE COEFFICIENT: SEE CONFIGURATION TABLE.
 - SELF RESONANT FREQUENCY MEASURED AT MAX RATED CAPACITANCE
- MECHANICAL SPECIFICATIONS:
 - TUNING TORQUE: 0.14 [in·oz] TO 1.00 [in·oz].
 - ALL PARTS FURNISHED ON 12 [mm] TAPE AND REEL; 1000 PIECES PER REEL.
- ENVIRONMENTAL:
 - OPERATING TEMPERATURE: -25°C TO +85°C.
 - RoHS COMPLAINT.
- MISCELLANEOUS:
 - IN ORDER TO PROVIDE THE HIGHEST LEVELS OF SERVICE, KNOWLES RESERVES THE RIGHT TO SUPPLY EQUIVALENT PRODUCTS WHERE SPECIFICATIONS ARE EQUIVALENT OR ENHANCED. THIS INCLUDES SUBSTITUTION OF JZ500 TO JZ400 AND HV SUFFIX FOR STANDARDS PARTS.

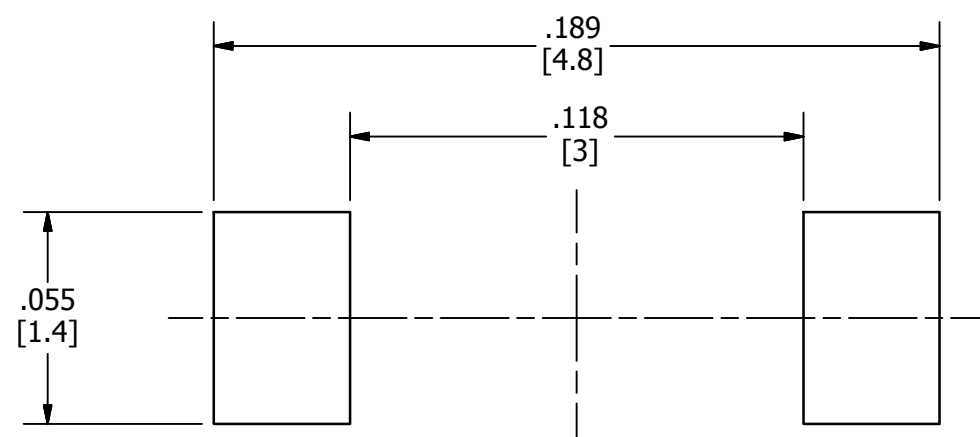
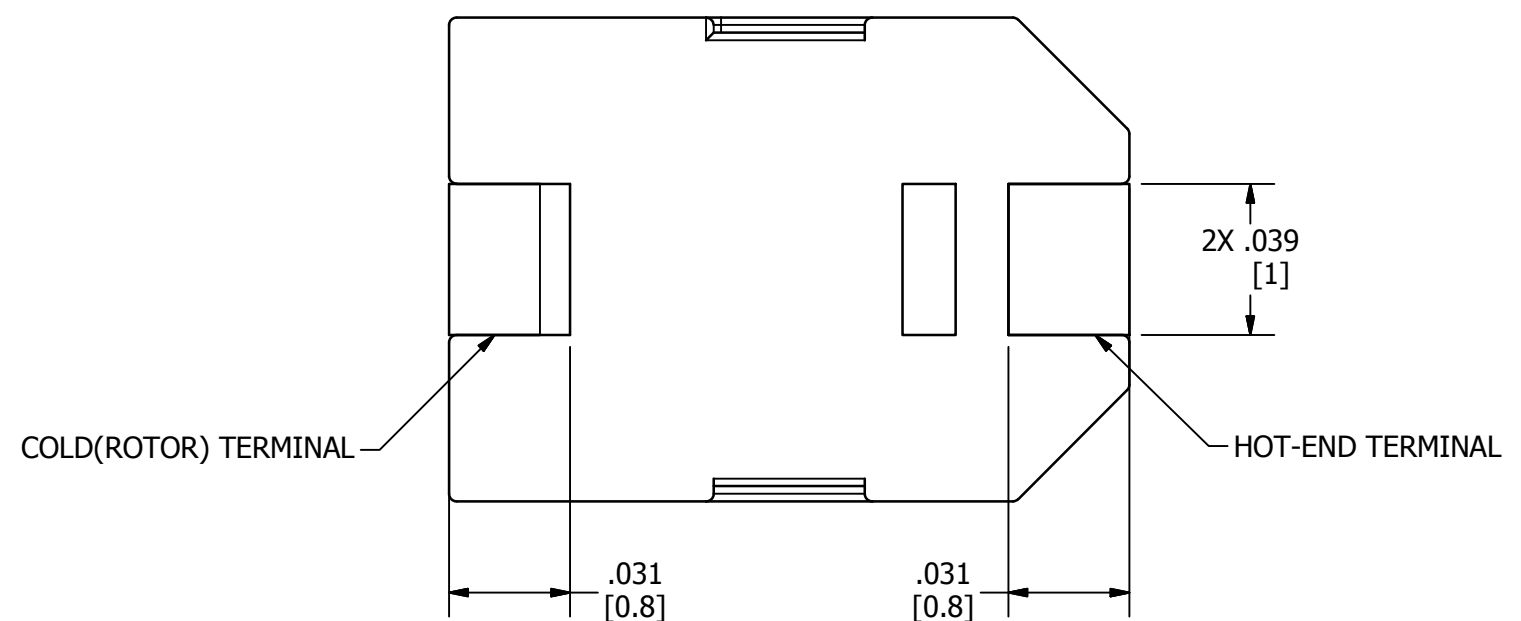
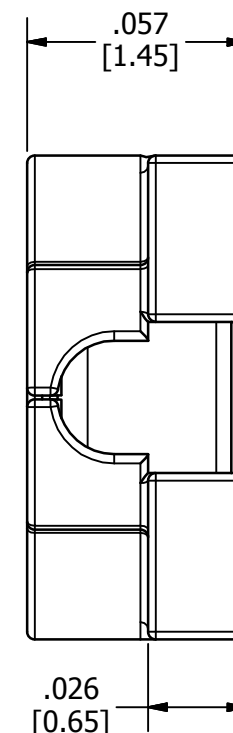
E



ISO VIEW
SCALE 20 : 1



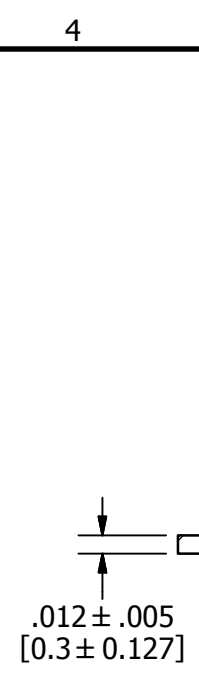
MAIN VIEW
SCALE 20 : 1



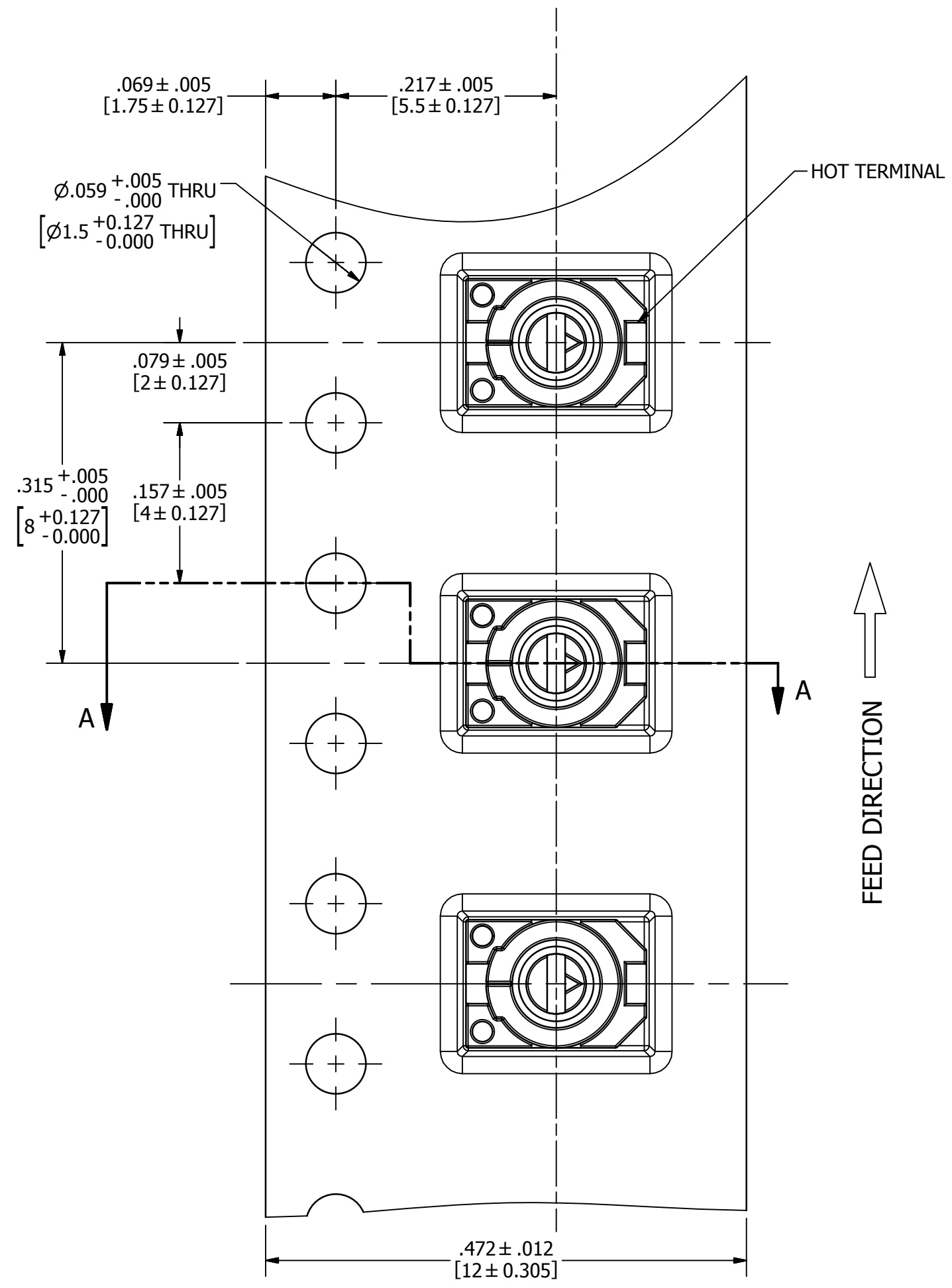
SUGGESTED FOOTPRINT
SOLDER PASTE THICKNESS OF 0.15 [mm] RECOMMENDED
SCALE 20 : 1

MATERIAL	N/A	DRAWN	E. CONTRERAS	11/26/2013	 VOLTRONICS THE TRIMMER CAPACITOR COMPANY 2250 NORTHWOOD DRIVE SALISBURY, MARYLAND 21801				
FINISH	N/A	CHECKED	T. BYRNE	12/10/2014					
TOLERANCES	.XX ± .XXX ±.008 .XXXX ± X° ± 1° X.X° ± 0.1°	SURFACE FINISH	32	QUALITY ASSURANCE	G. SATTERFIELD	12/12/2014			
3RD ANGLE PROJECTION		ENGINEERING		F. KHALIFEH	12/1/2014				
		T. DOLAN		12/4/2014					
INVENTOR 2013 GENERATED DWG		SIZE	C	CAGE CODE	18736	PART NUMBER	JZxxx	REV	E
		SCALE	PER VIEW	DWG NO.	V-7531	SHEET 1 OF 2			

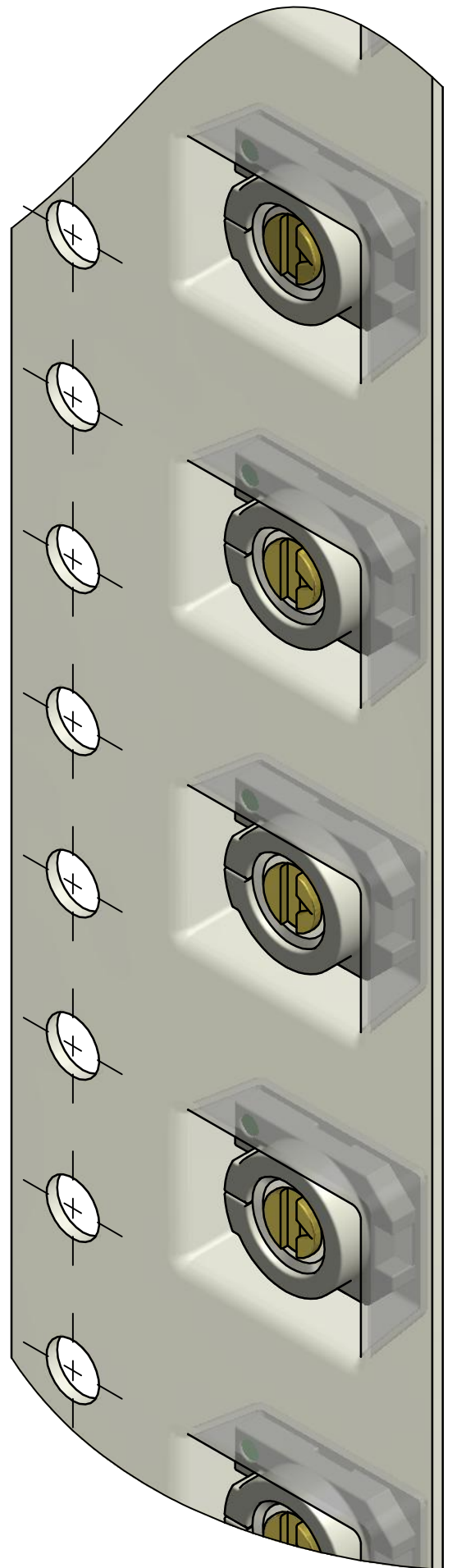
OUTLINE DRAWING FOR JZxxx SERIES



SECTION A-A
SCALE 8: 1



CARRIER TAPE DETAIL
SCALE 8: 1



CARRIER TAPE
ISO VIEW
SCALE 8: 1

HANDLING/STORAGE PRECAUTIONS:

- i.- DO NOT USE FLOW SOLDERING.
- ii.- DO NOT APPLY SOLDER OR FLUX TO ANY PARTS BUT TERMINAL
- iii.- WHEN USING SOLDERING IRON, THE SOLDERING IRON SHOULD NOT COME IN CONTACT WITH THE HOUSING OF THE CAPACITOR.
- iv.- PLEASE REFER TO SOLDER RECOMMENDATIONS CHART.
- v.- NO-CLEAN METHOD IS PREFERRED OVER SOLVENT WASHING.
EXPERIMENT WITH SAMPLES BEFORE WASHING BY SOLVENTS.
- v.- DO NOT APPLY LOCKING SPRAY OR PAINT TO TRIMMER.
ELECTRIC SPECIFICATIONS MAY BE AFFECTED ADVERSELY.
- vi.- PRODUCT CONTAINS LUBRICATION OIL. LUBRICATION LEAKS WILL NOT AFFECT PRODUCT SOLDERABILITY.
- vii.- USE OF CERAMIC SCREWDRIVERS IS RECOMMENDED FOR TUNING.
- viii.- DO NOT APPLY AXIAL LOAD DURING TUNING IN EXCESS OF 0.3[lbf]/1.5[N].
- ix.- KEEP PARTS OUT OF DIRECT SUNLIGHT EXPOSURE. STORE PARTS IN DUST-FREE ENVIRONMENT.

SOLDERING RECOMMENDATIONS

STANDARD LEAD-FREE SOLDERING PROFILE		
STAGE	SAC305 SOLDER	EUTECTIC SOLDER
PRE-HEATING	TEMPERATURE: 150[°C] - 180[°C]	TEMPERATURE: 120[°C] - 150[°C]
	TIME: 60 - 120 SECONDS	TIME: 60 - 120 SECONDS
HEATING	TEMPERATURE: 220[°C] MIN.	TEMPERATURE: 183[°C] MIN.
	TIME: 30 - 60 SECONDS	TIME: 30 - 60 SECONDS
PEAK HEAT	TEMPERATURE: 265[°C]	TEMPERATURE: 265[°C]
	TIME: 3 SECONDS MAX	TIME: 3 SECONDS MAX
REFLOW CYCLES	2 TIMES MAX	2 TIMES MAX
SOLDERING IRON		
SPEC	TEMPERATURE 400[°C] MAX	
	TIME: 3 SECONDS MAX	

knowles VOLTRONICS
 THE TRIMMER CAPACITOR COMPANY
 2250 NORTHWOOD DRIVE
 SALISBURY, MARYLAND 21801
 DLI • Novacap • Syfer • Voltronics

SIZE	CAGE CODE	PART NUMBER	REV
C	18736	JZxxx	E
SCALE	PER VIEW	DWG NO.	
		V-7531	SHEET 2 OF 2