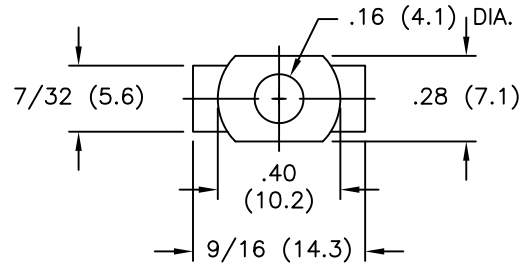
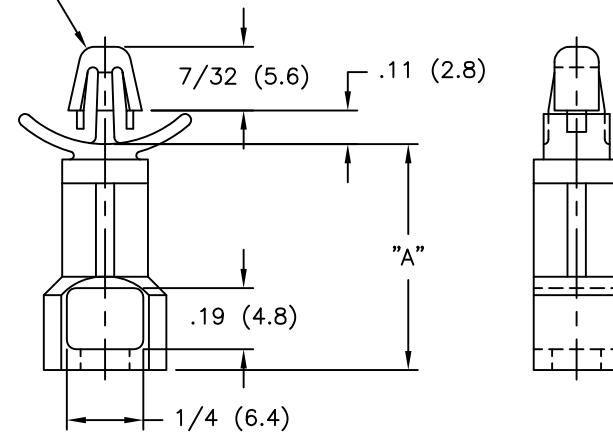


TO SNAP-LOCK IN A $.187 \pm .003$
 (4.75 ± 0.08) DIA. HOLE IN A
 $.031-.078$ $(0.79-1.98)$ PANEL THICKNESS



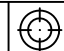

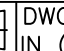
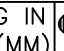

PART NO.	"A"
SRLAHS-7-01	7/16 (11.1)
SRLAHS-8-01	1/2 (12.7)
SRLAHS-10-01	5/8 (15.9)
SRLAHS-12-01	3/4 (19.1)
SRLAHS-14-01	7/8 (22.2)
SRLAHS-16-01	1 (25.4)

USE RICHC RIVET NO.	FOR CHASSIS THICKNESS
SR-4050	.026-.062 (0.7-1.6)
SR-4060	.062-.105 (1.5-2.7)
SR-4070	.105-.145 (2.7-3.7)
SR-4080	.145-.184 (3.7-4.7)
SR-4090	.184-.223 (4.7-5.7)
SR-4100	.223-.263 (5.7-6.7)
SR-4120	.282-.341 (7.2-8.7)

NOTES:

1. MATERIAL: NYLON 6/6 UL94 V-2 (RMS-01).
 NYLON 6/6 UL94 V-0 (RMS-19) AVAILABLE,
 TO ORDER REPLACE "-01" WITH "-19"
2. COLOR: NATURAL.
3. $.157-.161$ $(4.0-4.1)$ DIA. HOLE IN
 CHASSIS REQUIRED FOR APPLICATION

TITLE: SNAP RIVET LOCKING ARROWHEAD SUPPORT		DWG IN IN (MM)		FINAL	
E	SEE CO 200628 FOR CHANGES	SK 03.25.11	TOLERANCES UNLESS NOTED	FILE # SRLAHS	DWN: P.B.
D	SEE CO 200401 FOR CHANGES	SK 09.08.09	.XX=±.010	MAT'L: SEE NOTES	APP:
C	SEE ECN #1253 FOR CHANGES	SK 11.29.06	.XXX=±.005	RE: RICHCO, INC.	DT: 05-03-94 DT:
B	SEE ECN #1002 FOR CHANGES	SK 05.11.05	FRAC=±1/64	ANG=±1'	DT:
A	UPDATED NOTES AND CHANGED FILE NO.	SM 08.20.02			DT:
REV	DESCRIPTION	ENGR DATE			

PART # SEE TABLE PRINT TYPE CA

RICHCO INC.
 PO BOX 804238, CHICAGO, 60680
 (773) 539-4060