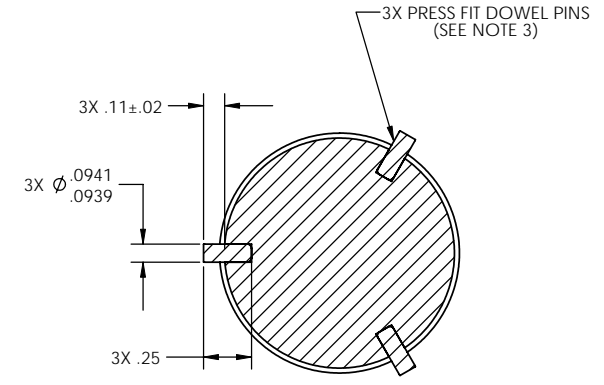
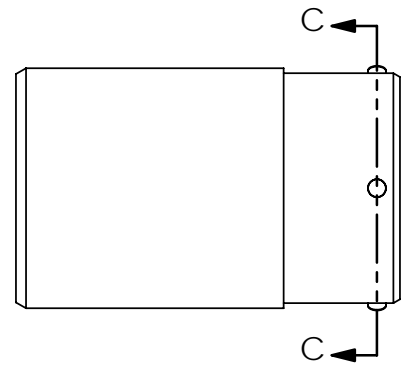
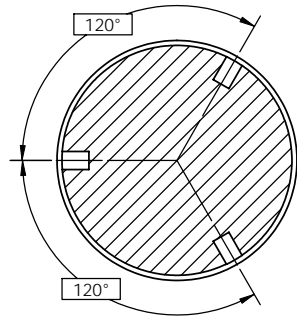
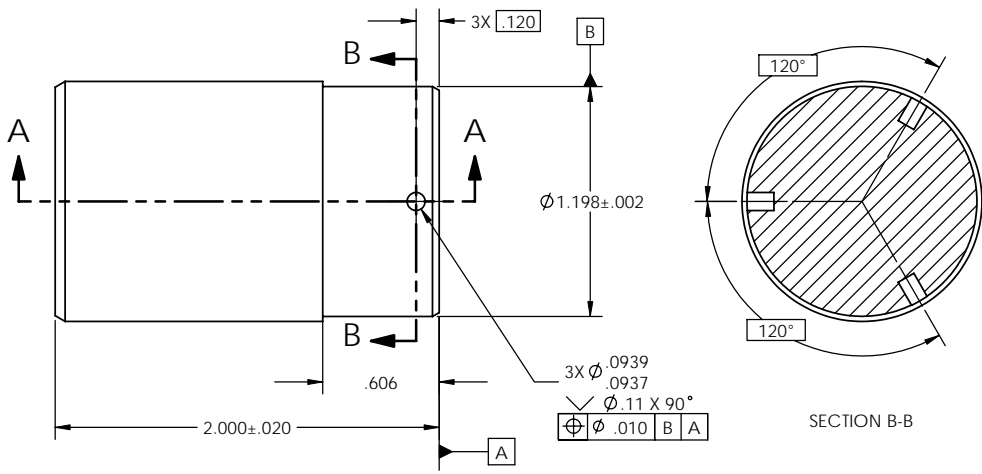
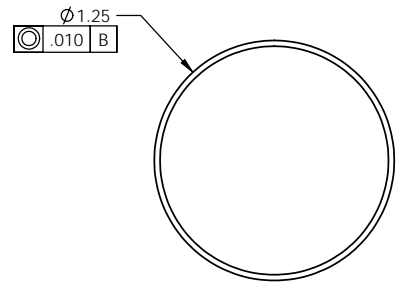
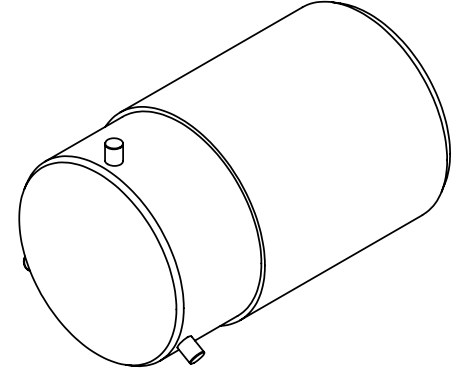
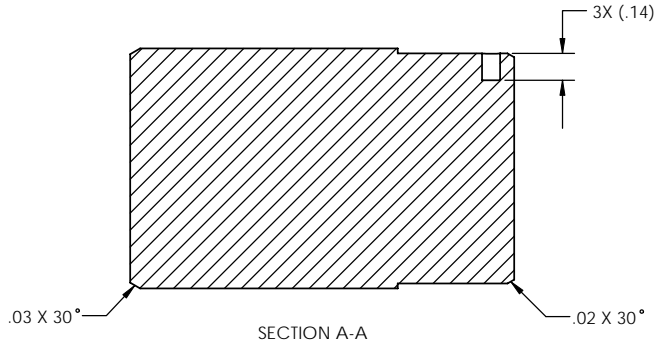


REVISIONS					
REV.	DESCRIPTION	ECO	DATE	DRWN	APPD
A	RELEASE TO PRODUCTION	1418	11/30/09	SC	JAS



NOTES:

1. MATERIAL: 6061 ALUMINUM.
2. FINISH: CLEAR ANODIZED.
3. AMERICAN NATIONAL STANDARD HARDENED GROUND MACHINE DOWEL PINS OR APPROVED EQUIVALENT. DOWEL PINS TO BE ZINC PLATED.
4. PART TO BE FREE OF BURRS, SHARP EDGES, AND FOREIGN MATERIAL.
5. UNLESS OTHERWISE SPECIFIED ALL FEATURES SHALL HAVE A PROFILE TOLERANCE OF .010 ALL OVER WITH RESPECT TO DATUMS A & B.
6. PART MUST BE ROHS COMPLIANT PER EUROPEAN UNION 2002/95/EC.
7. SEE CAD MODEL FOR ADDITIONAL DIMENSIONS.
8. FOR MACHINING INSTRUCTIONS ON CONVERTING BLANK TO FUNCTIONAL ADAPTER, REFERENCE DOCUMENT NUMBER 64MT-0535-13.

PROPRIETARY AND CONFIDENTIAL  
 THE INFORMATION CONTAINED IN THIS DRAWING IS THE SOLE PROPERTY OF OPTO TECHNOLOGY INC. ANY REPRODUCTION IN PART OR AS A WHOLE WITHOUT THE WRITTEN PERMISSION OF OPTO TECHNOLOGY INC. IS PROHIBITED.

UNLESS OTHERWISE SPECIFIED:		NAME	DATE	OPTO TECHNOLOGY INC. 160 E. Marquardt Drive, Wheeling IL 60090	
DIMENSIONS ARE IN INCHES TOLERANCES:		DRAWN	SC	04/06/09	TITLE: <b>ADAPTOR, BLANK</b>
ANGULAR: ± 1 DEG		CHECKED	JAS	11/30/09	
TWO PLACE DECIMAL ± .010		ENG APPR	JAS	11/30/09	
THREE PLACE DECIMAL ± .005		COMMENTS:			
FINISH: CLEAR ANODIZED TOLERANCING PER ASME Y14.5M 1994		MATERIAL:			
APPLICATION	DO NOT SCALE DRAWING	SIZE	DWG. NO.	REV	
		<b>C</b>	64MT-0535	<b>A</b>	
		SCALE: 2:1	WEIGHT:	SHEET 1 OF 1	